

ESR positions

15 ESRs are becoming a new generation of environmental scientists working on research topics of great global importance.

9 academic and 1 industrial partner in 5 countries

SWEDEN
Stockholm University

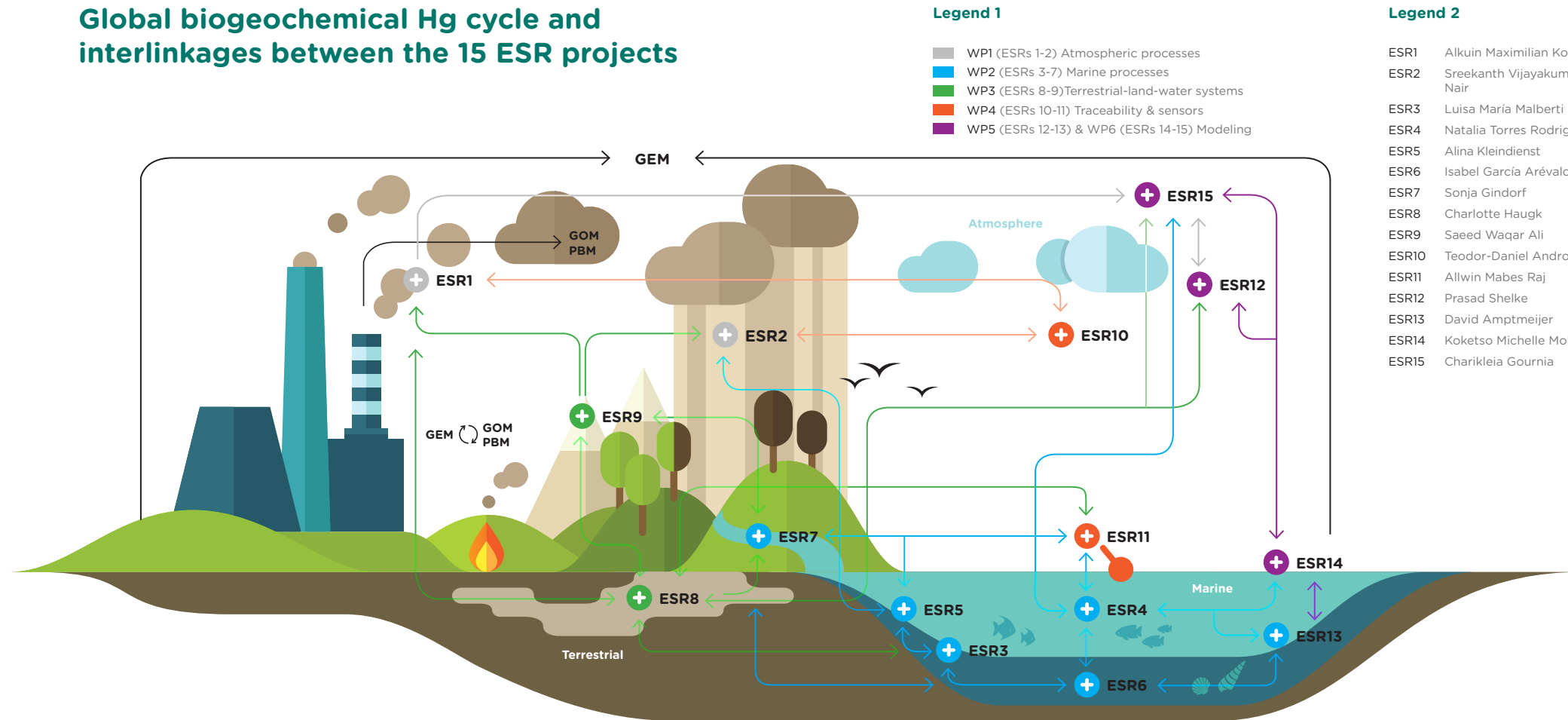
GERMANY
Helmholtz-Zentrum Geesthacht Zentrum für Material- und Küstenforschung GmbH

FRANCE
Centre National de Recherche Scientifique
Université d'Aix-Marseille - Mediterranean Institute of Oceanography
Université Grenoble Alpes
Université de Pau et des Pays de l'Adour
Ifremer

SLOVENIA
Jožef Stefan Institute
Institute for Environmental Protection and Sensors

ITALY
Institute of Atmospheric Pollution Research of the Italian National Research Council

Global biogeochemical Hg cycle and interlinkages between the 15 ESR projects



About GMOS-Train

With the signing of the **UNEP Minamata Convention** in 2013 and its ratification in 2017, the world's governments have accepted that **mercury (Hg) is toxic and of global relevance**; scientific needs will therefore shift towards best implementation practices of the Convention.

With the purpose to better understand the global exchange of Hg between atmosphere, hydrosphere, lithosphere and biosphere, we created **GMOS-Train** programme, where the next generation of young researchers will gain expertise through a **network-based, highly interdisciplinary research training** programme including atmospheric chemistry and physics, aquatic chemistry, ecology, analytical chemistry, multimedia modelling, and the use of science results for policy making. An additional feature is the **strong inter-sectorial collaboration** involving academic and non-academic partners, NGOs and international organisations.

Overall objectives of GMOS-Train network:

1. to provide urgently needed training in Hg science within the context of the UNEP Minamata Convention, and
2. to fill key knowledge gaps in biogeochemical Hg cycling linking anthropogenic emissions and Hg in marine food webs.

Partners

Arctic Monitoring and Assessment Programme	AMAP	Norway
United Nations Environmental Programme	UNEP	Switzerland
Massachusetts Institute of Technology	MIT	USA
Harvard University	Harvard	USA
Institut de Recherche pour le Développement	IRD	France
Swedish Polar Research Secretariat	SPRS	Sweden
European Environmental Bureau	EEB	Belgium
Tekran	Tekran	Canada
Lumex	Lumex	Russia/Germany
Dutch National Standard Laboratory	VSL	The Netherlands
University of Thessaloniki	AUTH	Greece
Meteorological Synthesizing Centre - East	MSC-E	Russia
International Postgraduate School Jožef Stefan	IPSJS	Slovenia
Université Paul Sabatier	UPS	France
Université Bretagne Loire	UBL	France
PS Analytical	PSA	UK

Contact

Milena Horvat - project coordinator
JSI Ljubljana, Slovenia
milena.horvat@ijs.si

Visit **GMOS-Train** website
www.gmos-train.eu



This project will receive funding from the European Union's Horizon 2020 research and innovation programme under the Marie Skłodowska-Curie grant agreement no. 860497



Global Mercury Observation Training Network in Support to the Minamata Convention



www.gmos-train.eu

 Jožef Stefan Institute, Ljubljana, Slovenia